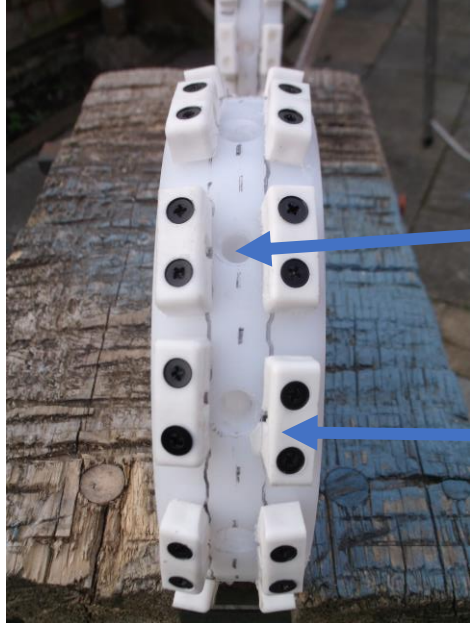


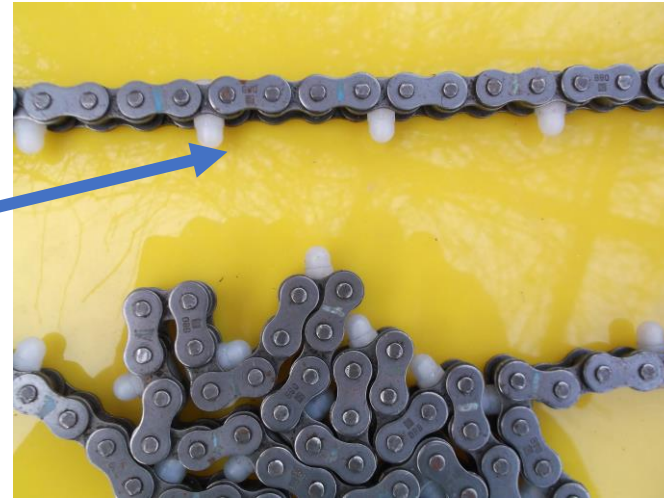
## NOVEL cycle tyre to tank track part 2



20mm nylon castor wheel

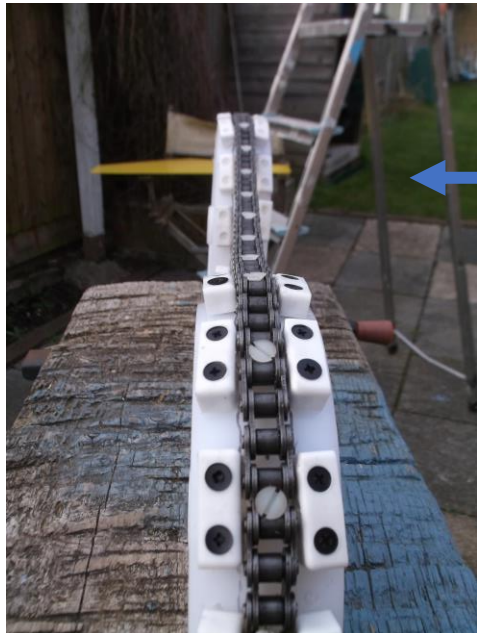
conical holes drilled to accept chain dome nuts at pitch

Modesty blocks added for chain guide over wheel (and accommodate chain depth)



Standard chain 08B1 Roller Chain (Dunlop) shown with Nylon M5 screws and dome nuts pitched see part 1 description

M5 nylon dome nuts from Radio spares (seem hard to find at any good price)



Novel sprocket drive: The chain dome nuts engaging both wheels: All Nylon. Self lube. Simple cheap maintenance parts.



Chain parts  
08B1 Roller Chain (Dunlop) (BB-14689)  
08B1 Connecting Link (Dunlop) (BB-14707) from "bearing boys" or other.  
Also need a chain breaking tool (cycle one not strong enough)



Chain round both wheels get the tyre on

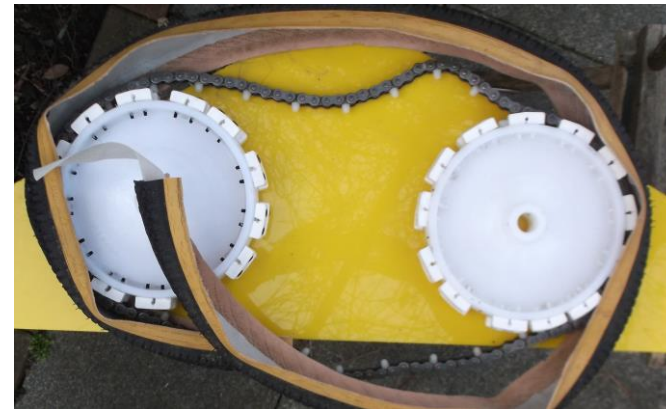


Nobbly cycle tyre cut in half: re-enforcing tape inside retained or replaced. Side steel wires away ( pair scissors)



See tyre side wall with steel wire simply cut away

Holes drilled at M5 chain screw pitch and countersunk



Fit tyre to chain. Remove all M5 screws nuts YAWN. Pass the screws through the tyre and through the chain and screw back the dome nuts. Boring. Cut tyre length to suit and join for smoteh ends . (use a leather needle and thread and glue to secure the ends .