

1. Make sure the unit is in the Home/Ready position. Press the Power button to turn the unit off, then unplug the unit.



2. Remove the bonnet:
 - a. Press and hold the latches on both sides of the bonnet, then lift and rotate the bonnet to its open position.



b. Lift the Bonnet up and out of the hinge to remove.



3. Remove the fence from the bezel at the globe entrance (if installed).



4. Remove the globe: Grab the black handle located on top of the globe, lift the globe up and out of the base, and set it aside.



5. Remove the waste drawer and set it aside.



6. Place the unit facedown (Bezel down) on a solid, flat surface. Use a magnetized screwdriver and/or tips for ease of screw removal:
 - a. Remove the ten (10) screws from the black bridge (what the bezel is attached to).



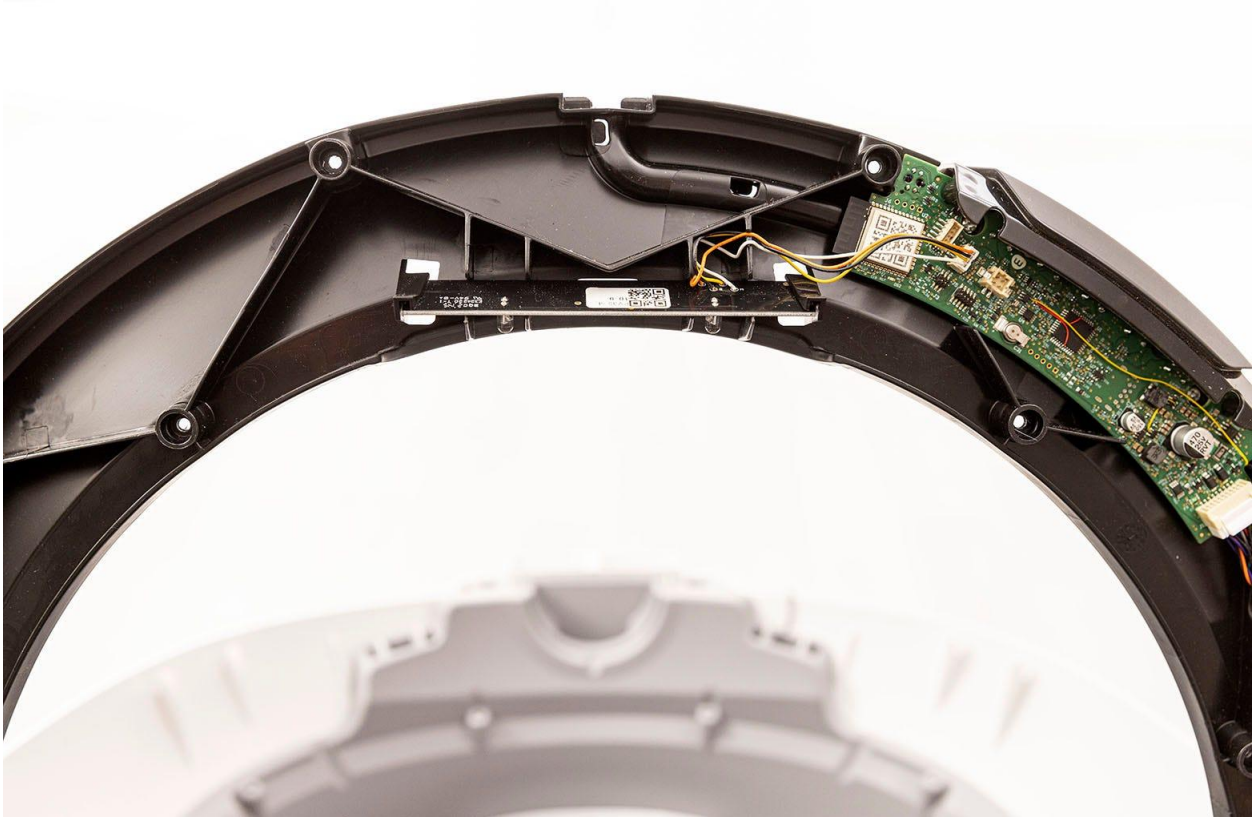
- b. Remove the four (4) screws behind the seal strips attached to the bezel (the top of the bezel as it is presently situated).



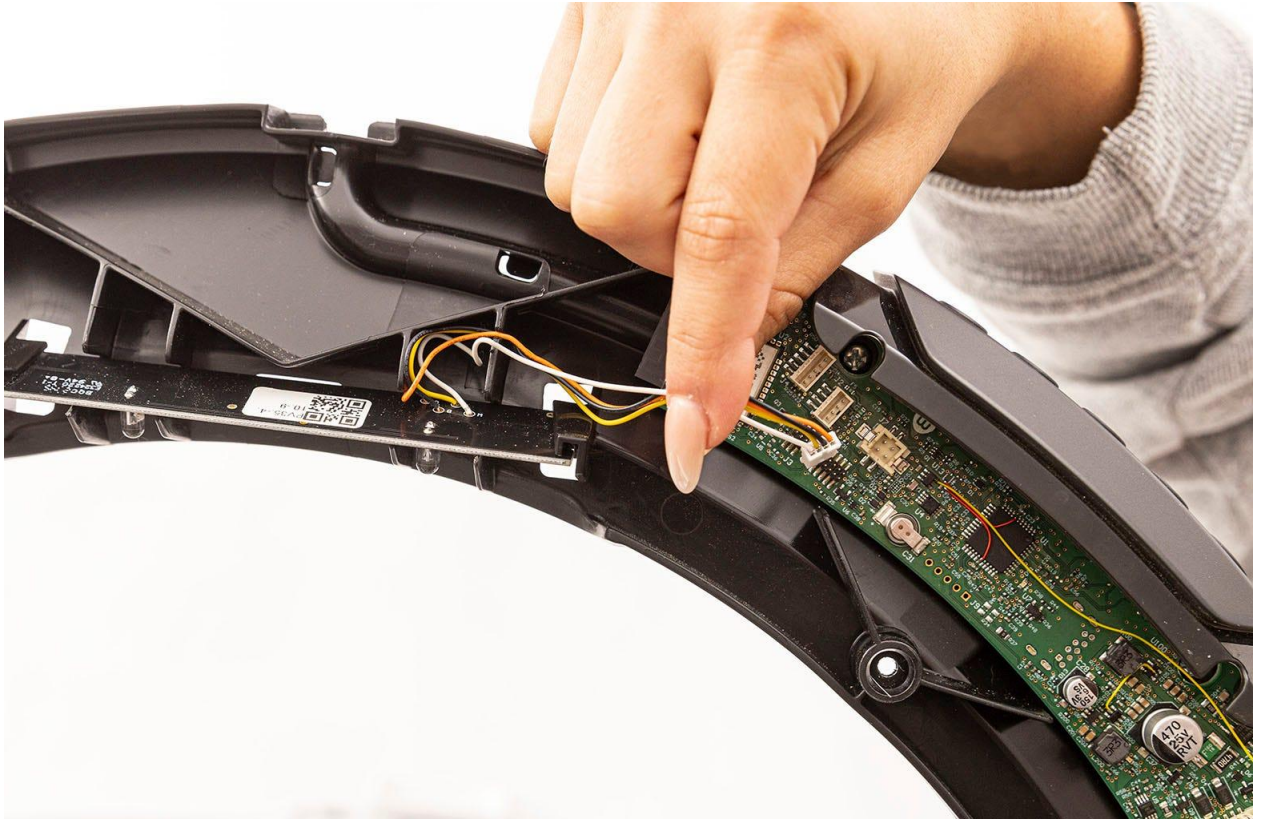
7. Tip the unit upright. With a hand on the drawer opening of the base, carefully pull out on one side of the bezel to begin separation from the bridge. Now pull out on the other side and remove the bezel completely.



8. Locate the laser board at the top center of the unit.



9. Gently disconnect the laser board from the main board by releasing the connector.



10. Gently remove the main wiring harness from the main board



11. Remove the two screws holding the control panel assembly to the bridge



12. Install the new Control Panel Assembly:
 - a. Re-install the two screws securing the Control Panel.
 - b. Connect the laser board connector to the main board. Connect the main wire harness to the main board.



13. Replace the bezel and place the unit facedown, bezel on a solid surface.



- a. Replace the fourteen (14) screws into the bridge.



14. Place the base right-side up again.



15. Replace the globe: Hold the globe by the handle and slide it back into the base. Ensure the back of the globe is sitting flush in the rear bearing pocket. The large black gear on the rear of the globe will line up with the small white gear in the base.



16. Replace the bonnet:

- a. Place the bonnet into the hinge behind the robot as shown.



- b. Rotate the bonnet downward over the globe and push down on the bonnet from the top to make sure it is latched and secure.



17. If desired, re-install the fence by snapping it onto the bezel at the globe entrance.



18. Slide the waste drawer back into the base.



19. Plug the unit back in and power it on.



NOTE:

Any LR4 units that have their Control Panels replaced will need to have the scale recalibrated.

Replacement Control Panels will flash alternating Red / Green until the recalibration process is completed.