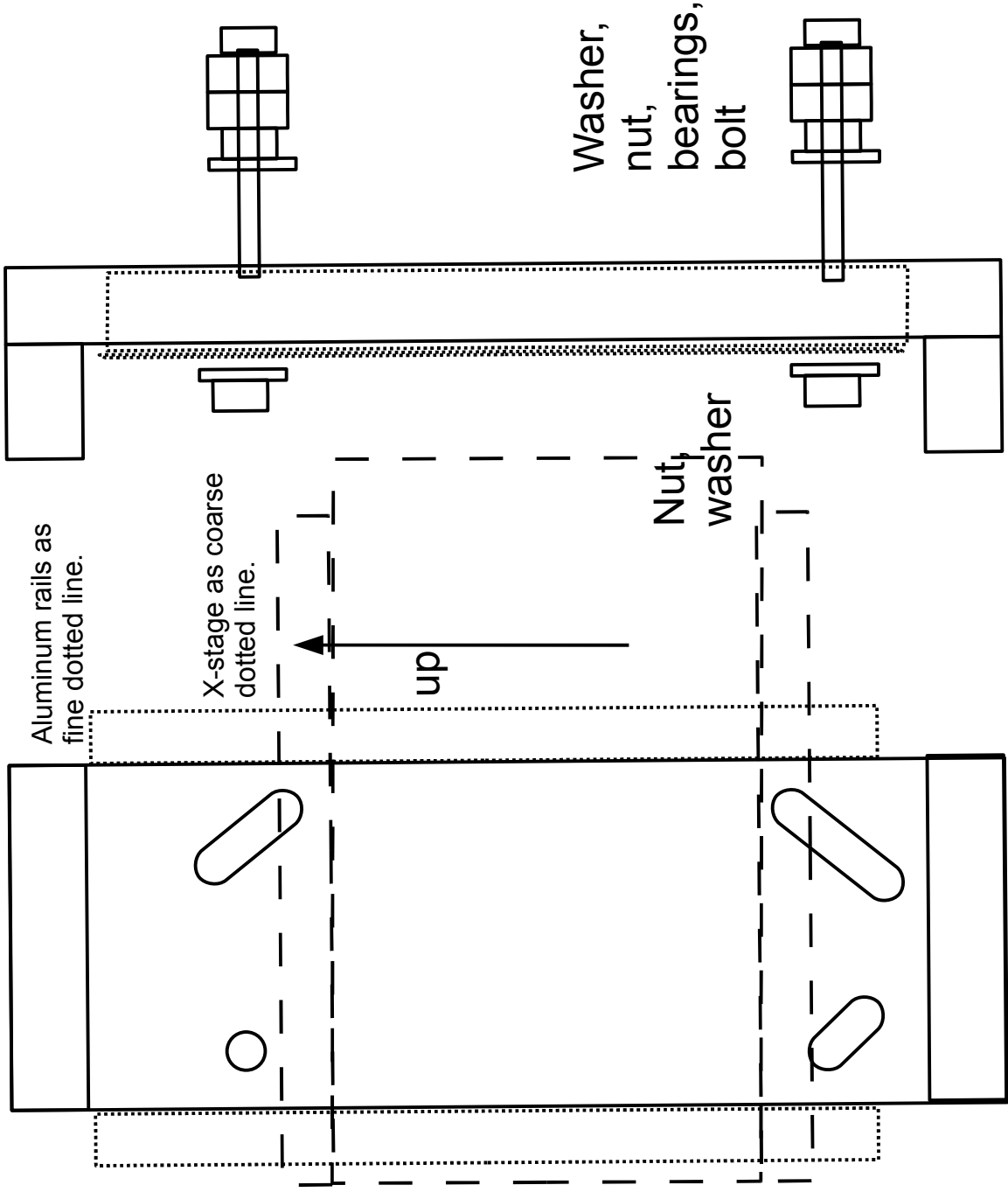


Bearing mount holes and bolts should scale to your bearings. Rollerblade bearings require about 7/8" hole (22mm) and fit a 5/16" (M8) bolt or lead screw. Purchase 2" fully-threaded bolts (M8 x 50mm or M8 x 60mm) for mounting the bearings to the stage. If you use a lock washer with your bearing, a 50mm or 2" bolt will not be long enough.

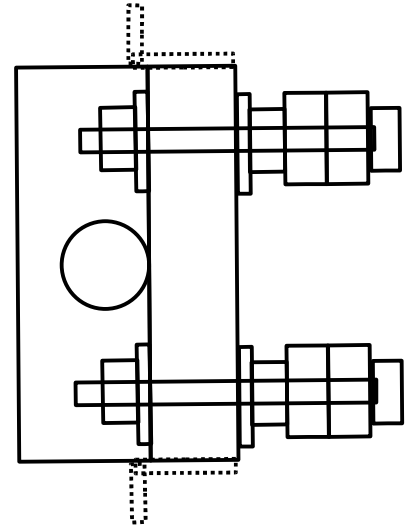
**X-Axis for Valkyrie-clone CNC**  
 John\_NY  
 (www.letsmakerobots.com)



Bearing mount holes and bolts should scale to your bearings.

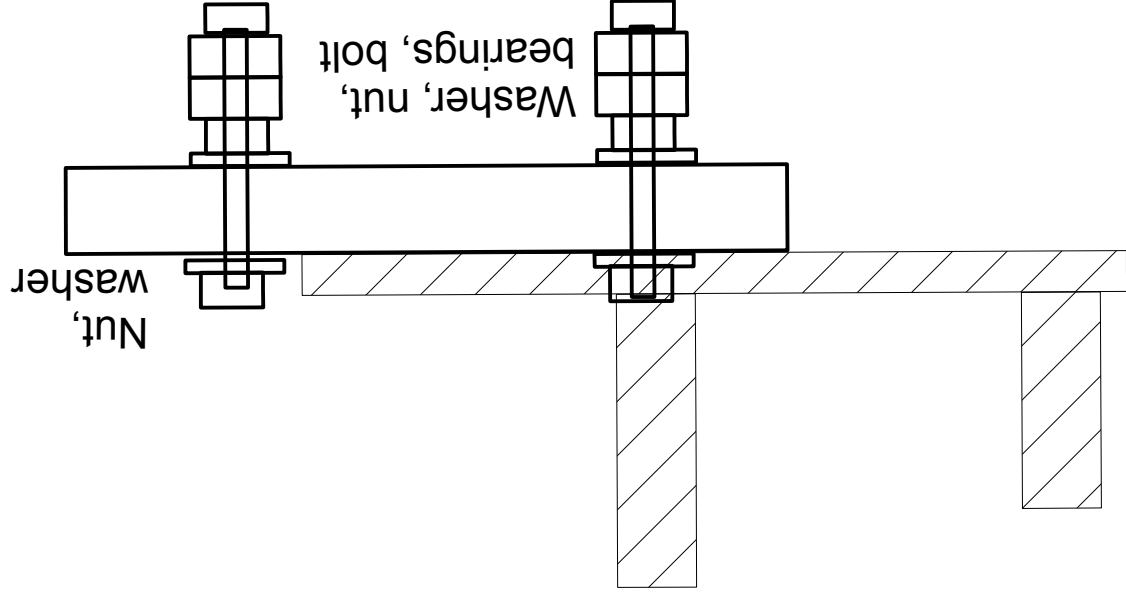
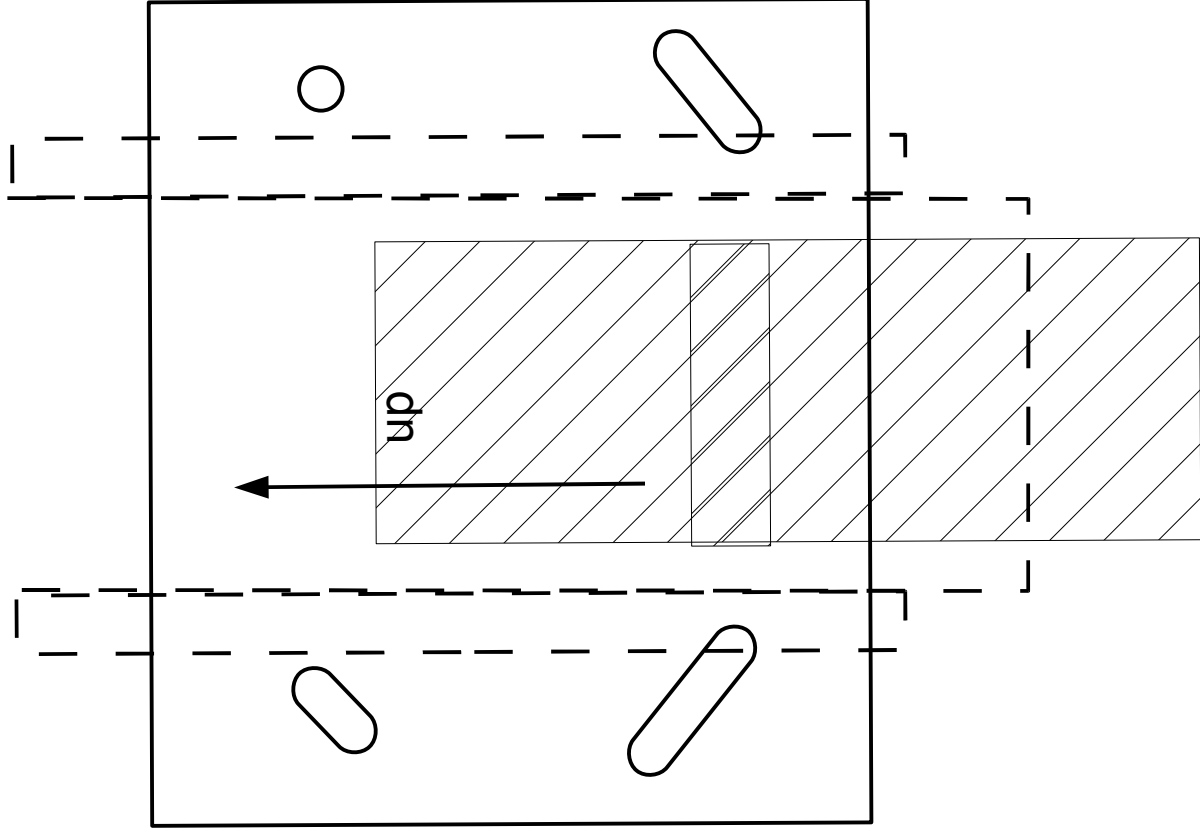
Rollerblade bearings require about 7/8" hole (22mm) and fit a 5/16" (M8) bolt or lead screw. Purchase 2" fully-threaded bolts (M8 x 50mm or M8 x 60mm) for mounting the bearings to the stage.

If you use a lock washer with your bearing, a 50mm or 2" bolt will not be long enough.

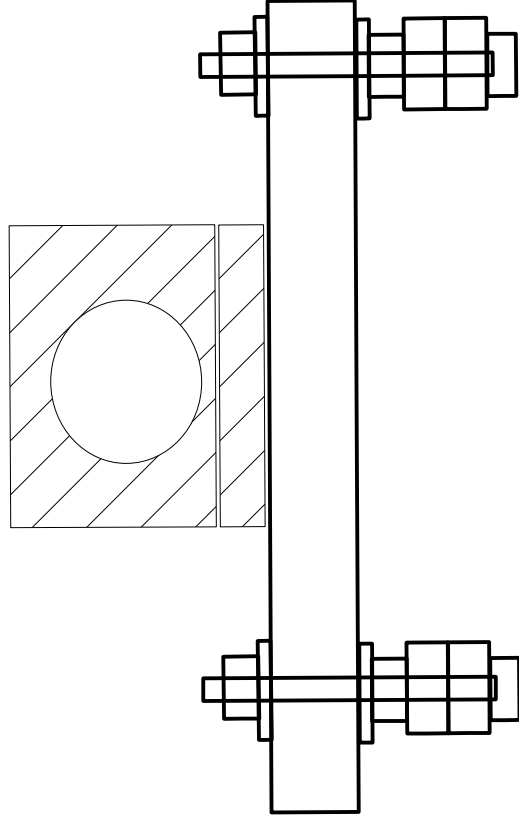


Y-Axis for Valkyrie-clone CNC  
 John\_NY  
 (www.letsmakerobots.com)

Y-stage as dotted line.



Mount for rotary tool will vary by tool. Two attach points are recommended for stability.



Bolts should scale to your bearings.  
Rollerblade bearings fit a 5/16" (M8) bolt or lead screw.

Purchase 2" fully-threaded bolts (M8 x 50mm or M8 x 60mm) for mounting the bearings to the stage.  
If you use a lock washer with your bearing, a 50mm or 2" bolt will not be long enough.

Z-Axis for Valkyrie-clone CNC  
John\_NY  
([www.letsmakerobots.com](http://www.letsmakerobots.com))